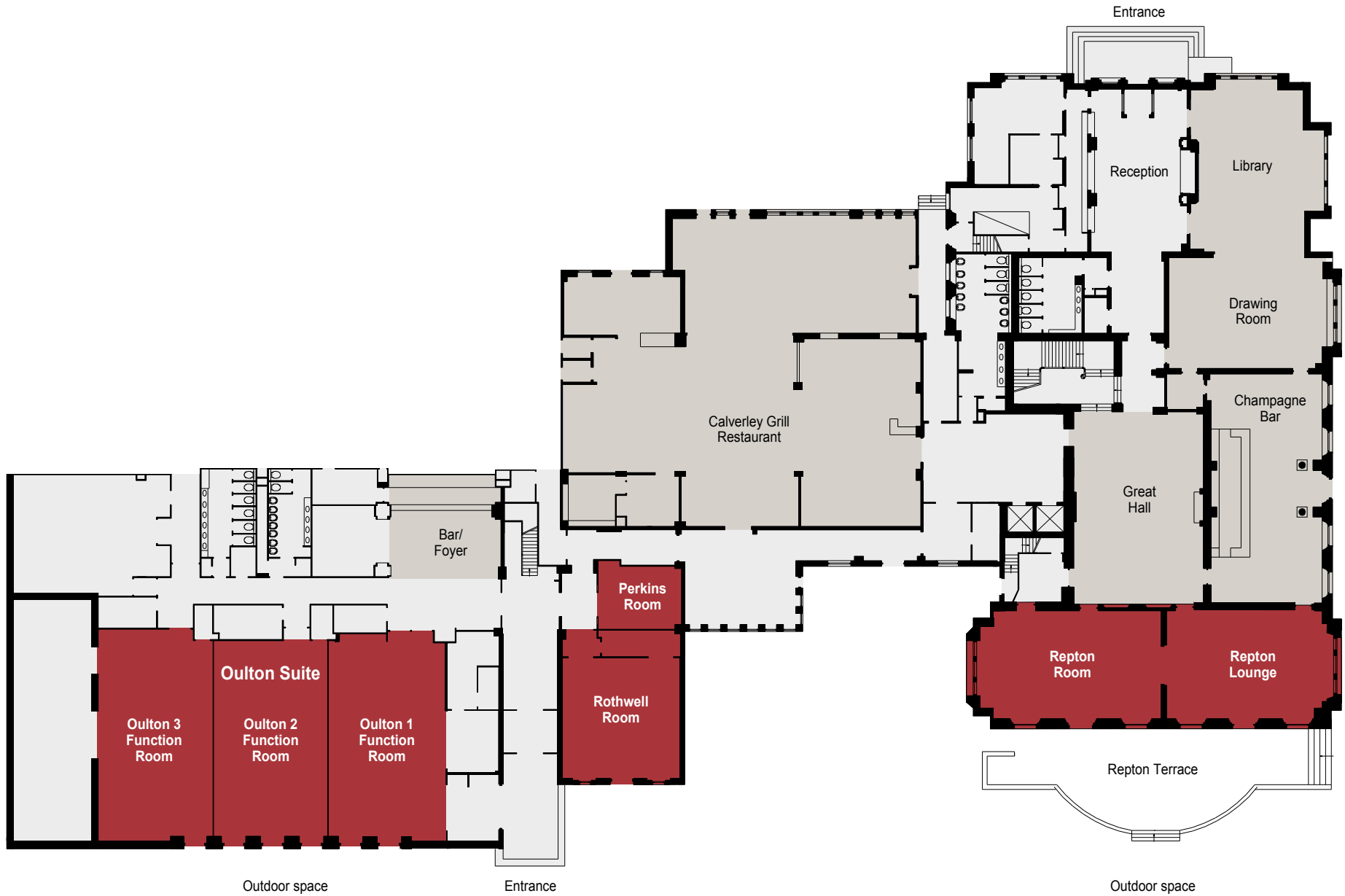
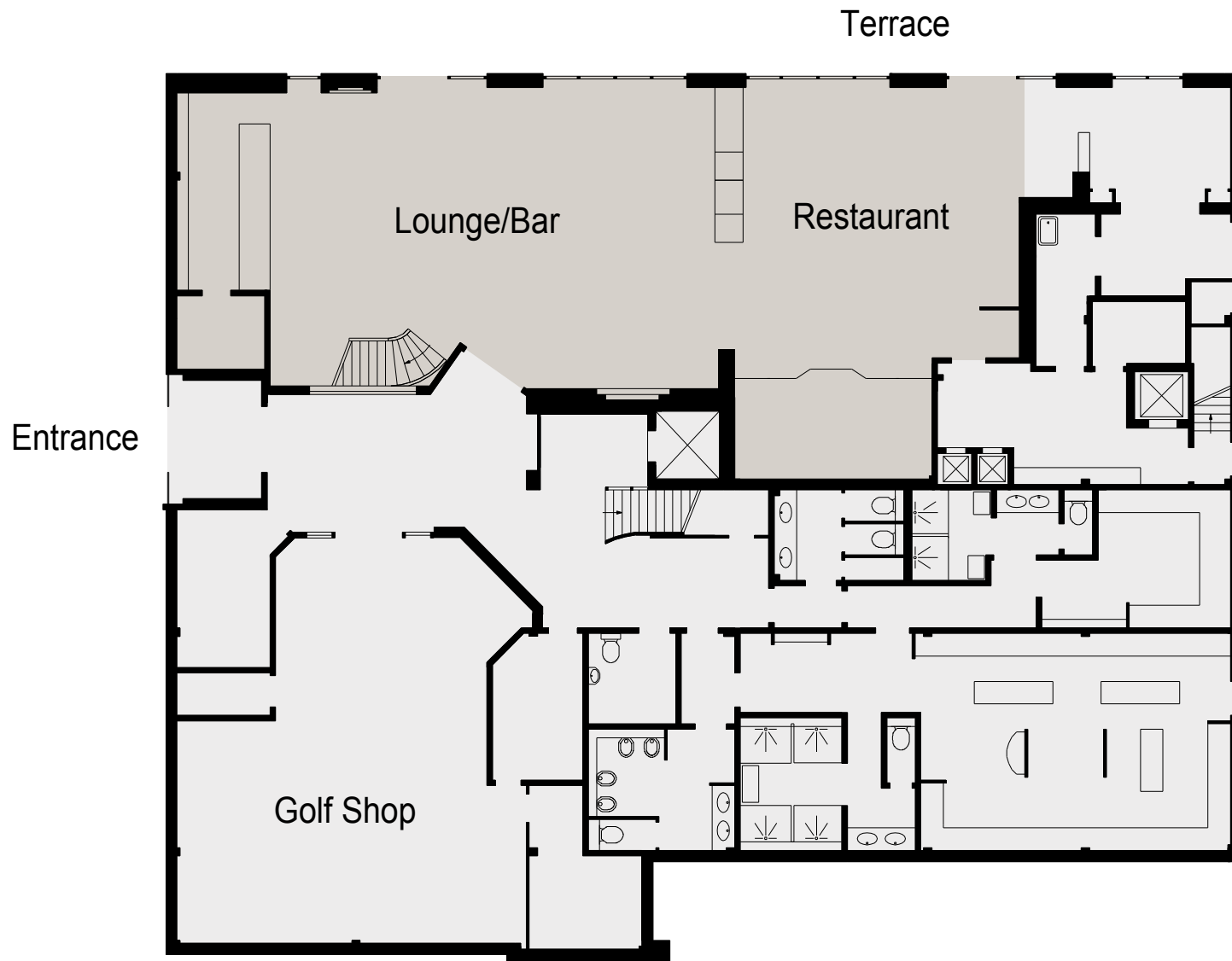


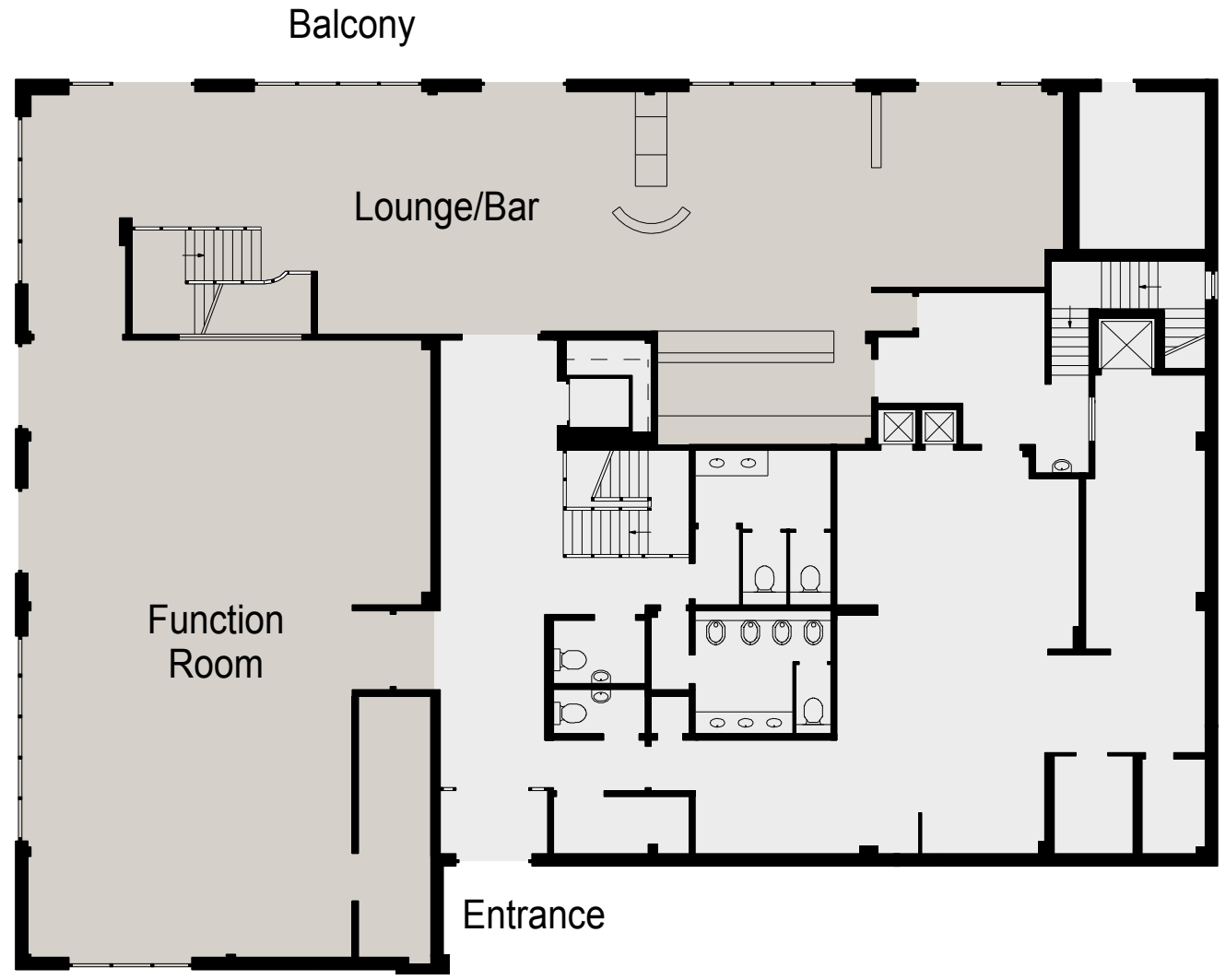


# OULTON HALL

—  
THE QHOTELS COLLECTION





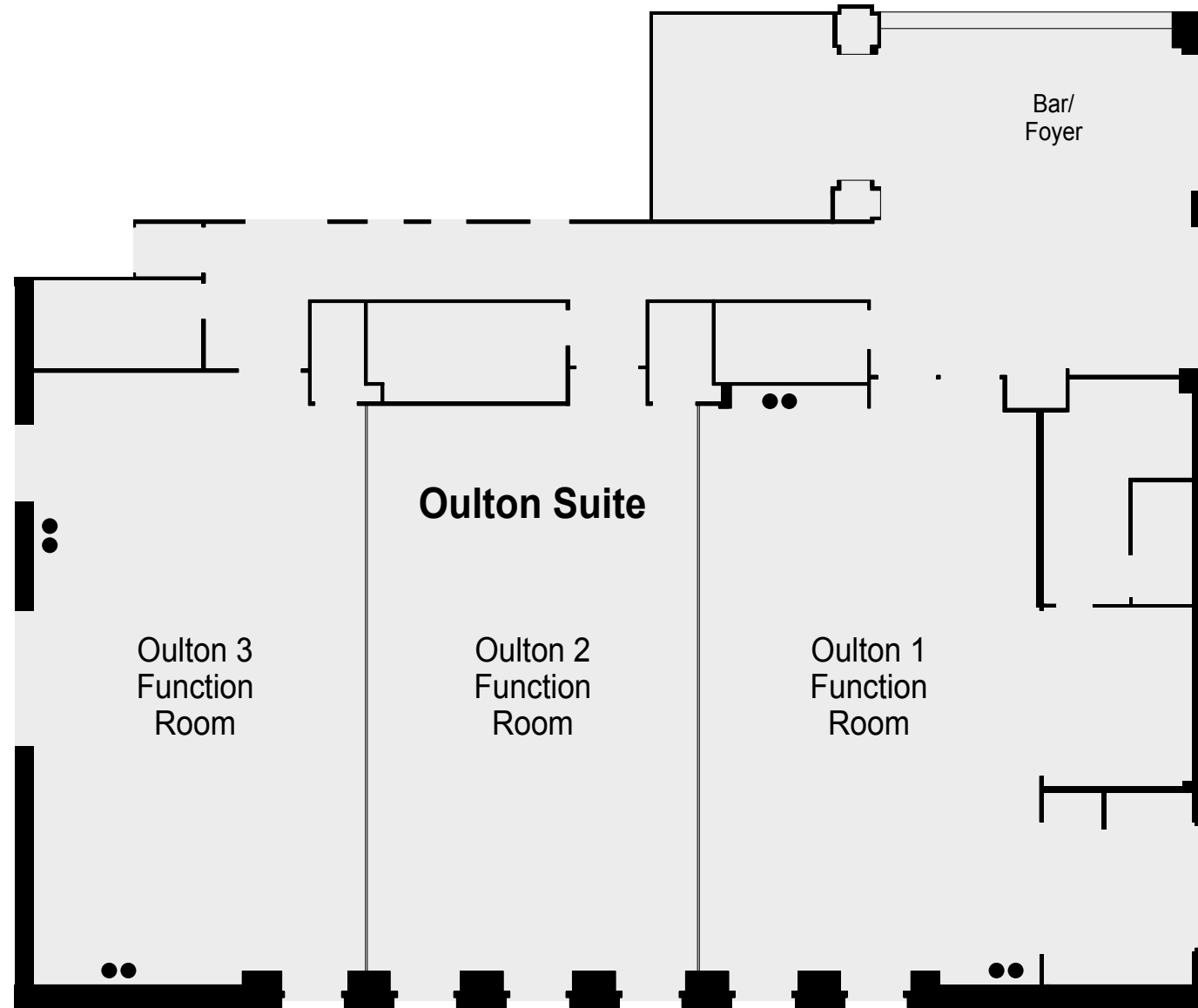


OULTON HALL  
THE QHOTELS COLLECTION

GOLF CLUB HOUSE - CLARET JUG BAR & RESTAURANT  
FIRST FLOOR

**KEY**

- Single 13amp Power Point
- Double 13amp Power Point
- ☎ Telephone Socket
- ♿ Wheelchair Access



Outdoor space



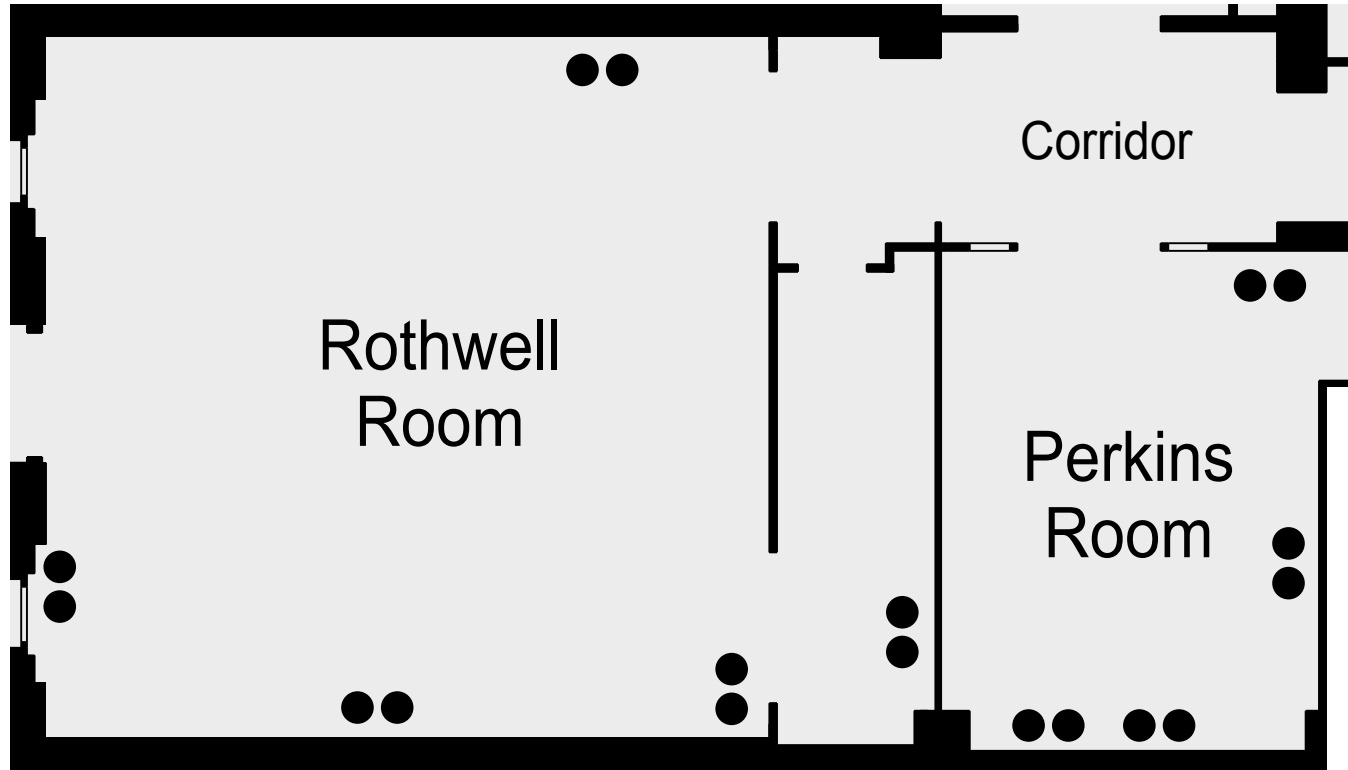
**OULTON HALL**

THE QHOTELS COLLECTION

OULTON SUITE - MAIN HOTEL - GROUND FLOOR

**KEY**

- Single 13amp Power Point
- Double 13amp Power Point
- ☎ Telephone Socket
- ♿ Wheelchair Access

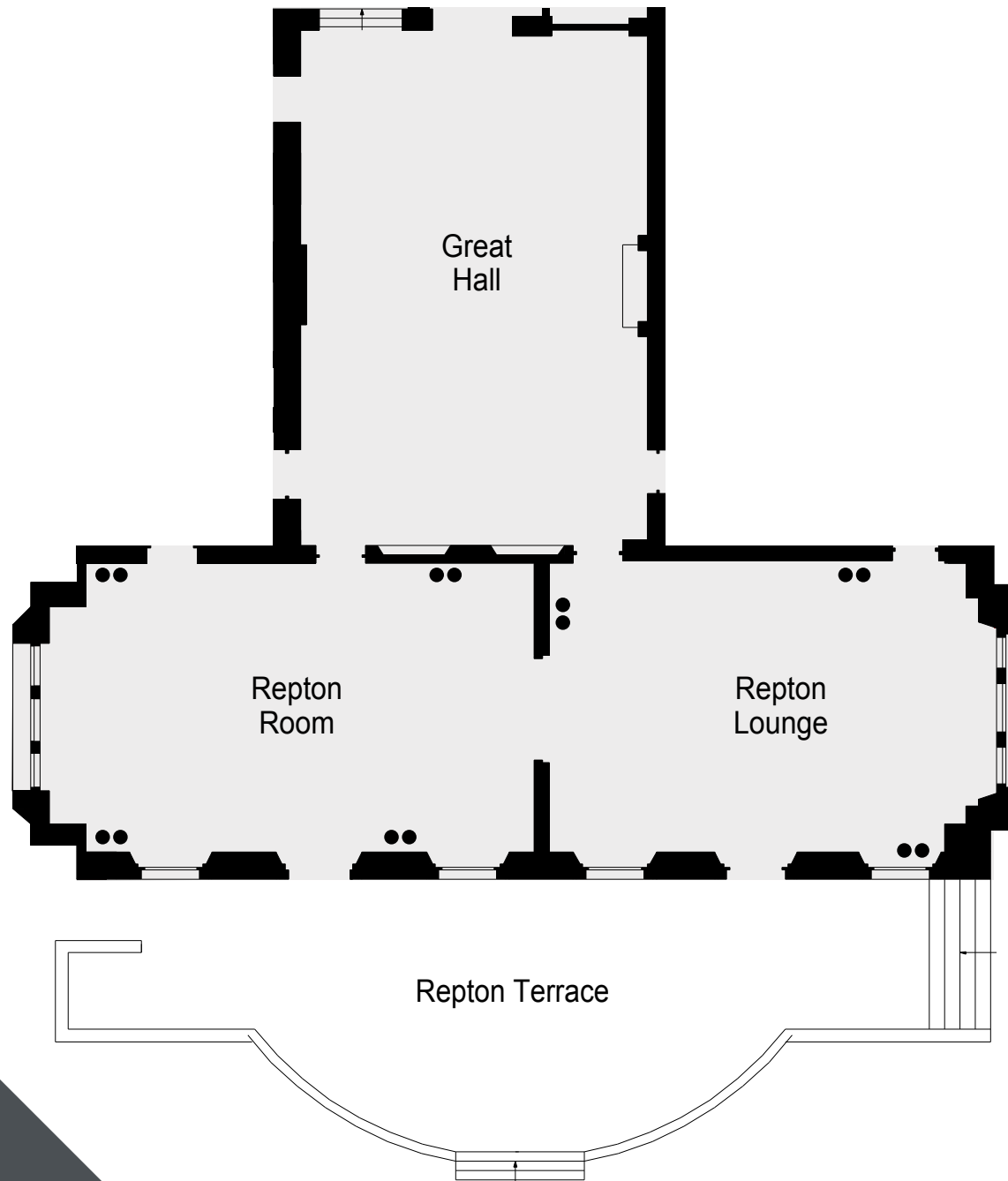


**OULTON HALL**  
THE QHOTELS COLLECTION

MAIN HOTEL - GROUND FLOOR

**KEY**

- Single 13amp Power Point
- Double 13amp Power Point
- ☎ Telephone Socket
- ♿ Wheelchair Access

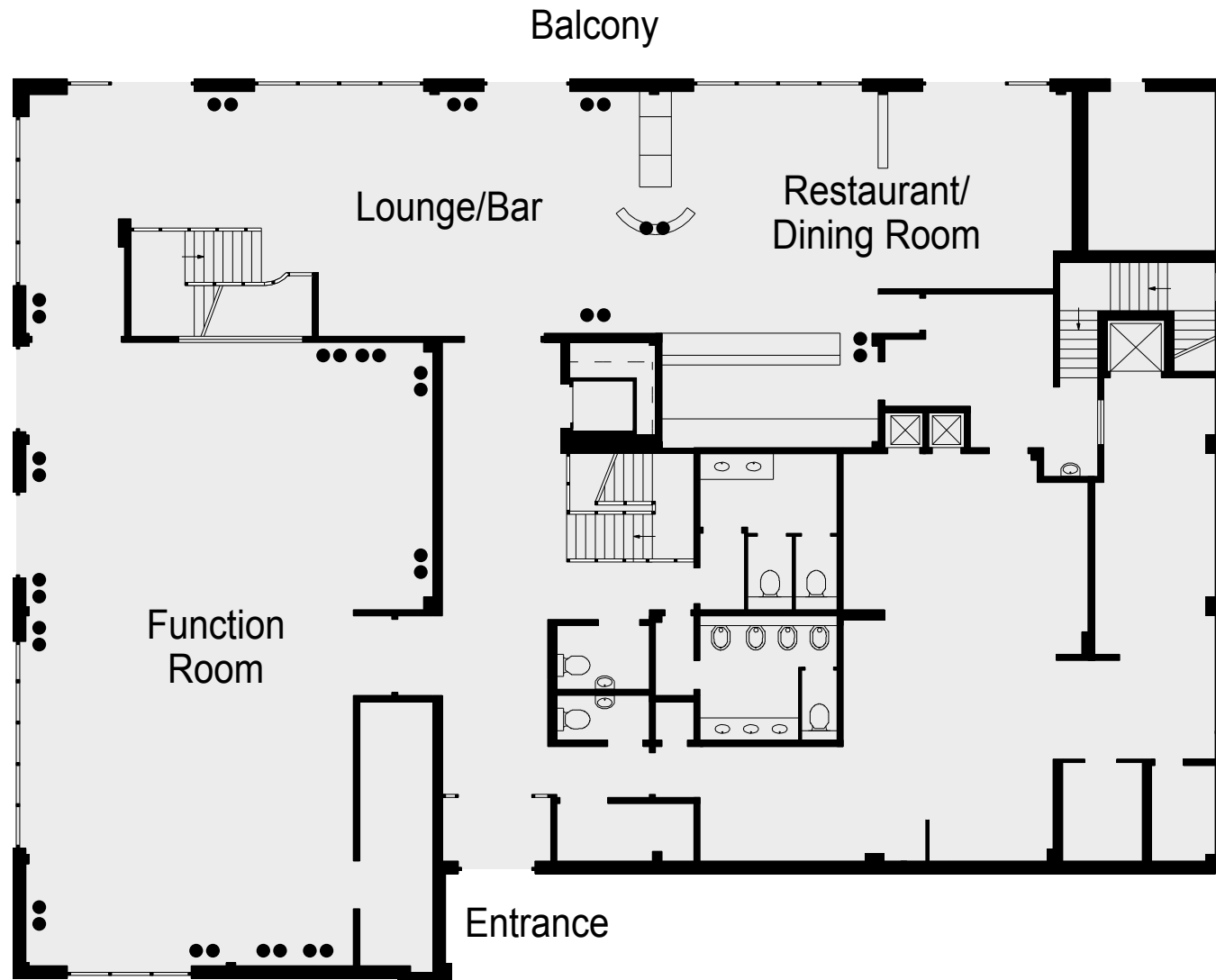


**OULTON HALL**  
THE QHOTELS COLLECTION

MAIN HOTEL - GROUND FLOOR

**KEY**

- Single 13amp Power Point
- Double 13amp Power Point
- ☎ Telephone Socket
- ♿ Wheelchair Access



**OULTON HALL**  
THE QHOTELS COLLECTION

GOLF CLUB HOUSE - UPPER CLARET JUG FUNCTION ROOM  
FIRST FLOOR



# CAPACITIES

Meeting Room	Floor	Dimensions (M) - L x W x H	Theatre Style	Cabaret	Classroom	Boardroom	Banquet
Oulton Suite	G	23 x 13 x 3.5	220	160	160	n/a	220
Oulton 1 & 2	G	15.3 x 13 x 3.5	200	80	100	40	140
Oulton 2 & 3	G	15.3 x 13 x 3.5	200	80	100	40	140
Upper Claret Jug	1	10 x 15 x 3	70	48	40	30	80
Repton Room	G	15 x 8 x 5	70	42	24	25	40
Repton Lounge	G	10 x 7 x 5	35	28	16	22	30
Rosedale Suite	1	7 x 5.9 x 3.8	25	12	12	14	n/a
Perkins Suite	G	5 x 4 x 3	n/a	n/a	n/a	6	n/a
Rothwell Room	G	8 x 8 x 4	50	28	24	22	40



**OULTON HALL**

THE QHOTELS COLLECTION